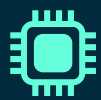




Empowering Industries
through Connected Intelligence

Industry 5.0



Products

- Wireless Busbar Solutions
- Modbus Gateways
- Remote IO Controllers
- 4G/5G IIOT Devices
- WiFi IIOT Devices
- LoRa/ZigBee Devices



Solutions

- Energy Management
- Water Management
- Digital Checksheet
- Production Monitoring
- Busbar Monitoring System

SenseLive Technologies

Industrial IOT & Prescriptive Operations Intelligence

SenseLive fuses wired and wireless telemetry—from IO controllers to busbar temperature sensors and legacy devices—into a unified, real-time operational brain for energy, water, production, asset health, and compliance. Its platform delivers anomaly detection, digital checklists/logbooks, production performance insights, and prescriptive “what-to-do-next” reports via role-aware dashboards, helping clients cut costs (often up to 20%), improve uptime, and standardize execution across multiple sites with minimal disruption.

TAKE THE RIGHT SOLUTION FOR YOUR FACTORY



INDUSTRIAL IOT

- Manufacturing Execution System
- Energy Management
- Water Management
- Emergency Response Management
- Predictive Maintenance
- Production Productivity Analysis
- Environment, Health & Safety



AI SOLUTIONS

- PPE Detection system
- Safety Compliance Supervision
- Restricted Area Monitoring
- Conveyor Supervision
- Custom Model for Factory Requirements



DIGITAL LOGBOOK

- Smart Work Permits (Hot Work, Work at Heights, Confined Space & Other)
- Machine Maintenance Check Sheet & Work Order Management
- Daily Production Check Sheet
- To Do List For Scheduling Activities

Products



SenseLive Edge8000
Wireless busbar temp. monitoring

- Up to 60 wireless sensors
- Integrated Energy Meter
- RS485 Data Output
- Built-In Dual Relays



SenseLive SenseBT-222
BT-Powered Wireless Temp. Sensor

- Long Battery Life
- Wide Range
- Industrial Design
- Wireless Communication



SenseLive SenseCT-222
CT-Powered Wireless Temp. Sensor

- Self-Powered
- Real-time Monitoring
- Easy Installation
- Maintenance Free



SenseLive Edge4000
Wireless busbar temp. monitoring

- Up to 240 wireless sensors
- RS485 Data Output
- Built-In Dual Relays



SenseLive X5050
RS485 to TCP/IP Modbus Server

- Modbus TCP ↔ RTU
- MQTT Gateway
- DIN-Rail Mount
- -40°C to +85°C



SenseLive X3050
RS485 to TCP/IP Modbus Gateway

- Modbus TCP ↔ RTU
- MQTT Gateway
- DIN-Rail Mount
- -40°C to +85°C



SenseLive X5050D
RS485 to TCP/IP Modbus Server

- Modbus TCP ↔ RTU
- MQTT Gateway
- DIN-Rail Mount
- -40°C to +85°C



SenseLive X3030
1 Serial server / Modbus gateway

- RS232 to TCP/IP
- Wall-mounted design
- RS485 Support: Supports up to 32 slave devices
- Wide operating temperature range of -40°C to 85°C.



SenseLive X6000
2 Port Isolated Device Server

- Modbus RTU to Modbus TCP Converter
- 2-Port Isolated Device Server
- Multi-Host Modbus RTU-TCP Converter
- MQTT Protocol Support
- DIN-Rail Mounting



SenseLive X5200
RS485 to TCP/IP Modbus TCP

- Dual RS485 Ports
- Wide Operating Range: -40°C to +85°C, 95%RH
- Flexible Power: 9-24V DC
- Multi-mode: TCP Server/Client, UDP, Multicast



SenseLive X5600
RS232/485/422 To TCP/IP Converter

- Dual RS485 Ports
- Modbus TCP-RTU
- MQTT & JSON Gateway
- 10/100M Ethernet with 2KV surge protection



SenseLive X6600
RS232/485/422 to TCP/IP converter

- Modbus Gateway
- Modbus TCP ↔ RTU
- MQTT & JSON Gateway
- Wide Operating Range: -40°C to +85°C. 95% RH
- Dual RS485 Ports

Products



SenseLive X7400D
DIN-rail 4G CAT1 DTU with RS485 Interface

- 4G CAT1 with 2G fallback
- RS485 Interface
- MQTT & JSON Support
- Edge Computing Features



SenseLive X7400
4G LTE DTU - RS232/485 Serial to HTTP

- LTE Cat 4G
- RS-232/485 to 4G Cat 1 DTU
- Compact Design
- Easy Setup



SenseLive X7400E
4G IoT Gateway with Edge Intelligence

- 2G/3G/4G multi-network support
- TCP/UDP Server & Client Modes
- Flexible serial port 1200-460800bps
- Easy setup via AT, Web, SLVircom



SenseLive X7777
Serial server /Modbus gateway RS232/485 to RJ45/WiFi/4G

- 4G/WiFi/Ethernet / RS232/RS485
- Supports up to 30 TCP connections
- TCP-Serial, Modbus RTU-TCP, MQTT, JSON conversion



SenseLive X9000
4G IoT Gateway with Edge Intelligence

- 4G CAT1 Connectivity
- Digital & Analog Inputs
- Dual RS485 Ports
- 4 * AI (4-20 mA, 0-5 V, 0-10 V, resistance; 12-bit ADC)



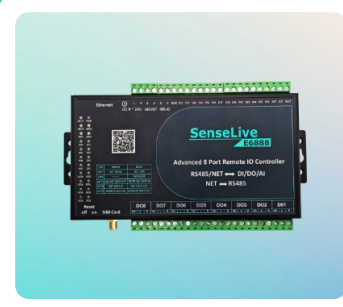
SenseLive E7500
RS485-based Remote IO Controller

- 4 Digital Input
- 2 Analog Input
- 4 Relay Outputs
- Modbus RTU Support



SenseLive E7000
Ethernet-based Remote IO Controller

- 4 Digital Inputs
- 2 Analog Input
- 4 Relay Outputs
- Modbus TCP Support



SenseLive E6888
8 Channels DI/DO/AI Remote IO Controller

- 8 Digital Inputs
- 8 Analog Inputs
- 8 Digital Outputs
- Protocol Support



SenseLive E7010A
4-Channel IO Controller 1-RS485 to AI/AO

- 4-channel AI input
- 4-channel AO output
- Current output: 4-20mA
- Ethernet to RS485/AI/AO



SenseLive E7010D
4-Channel IO Controller 1-RS485 to DI/DO & 3- Eth to RS485/DI/DO

- 4 Channel DO Output
- 4 Channel DI Input
- Modbus RTU- to-JSON conversion
- Protocol MODBUS TCP/MQTT/JSON/HTTP



SenseLive X8555
RS232/485/422 to Optical Fiber

- Single Mode
- Single Fiber
- RS232/RS485/RS422 communication
- Wide Temperature Range



SenseLive X8550
Optical Transceiver Industrial Fiber

- Dual Ports
- Reliable Single-Mode Fiber Transceiver
- Wide Operating Range: -40°C to +85°C
- Auto-Adapt - 10/100M speed

Products



SenseLive X7900
LoRa Gateway with TCP Output

- LoRaWAN & Private LoRa Protocols
- TCP/IP Gateway Functionality
- Multiple Network Interfaces
- Web-Based Management Console



SenseLive X7050
WiFi Serial Server-RS485 to 802.11b/g/n with Modbus RTU-TCP

- Dual Band
- IP65 Rated
- Enterprise Security
- High Data Throughput



SenseLive X7700D
DIN-Rail LoRa Device

- DIN-Rail Mounting
- RS485 & Modbus RTU support
- Long-Range LoRa Transmission
- Secure & Encrypted Communication



SenseLive X7800
Wall-Mounted LoRa Device with RS232 Features

- Wall-Mounted & Compact Design
- Dual RS232 & RS485 Support
- LoRaWAN & Private LoRa Protocol
- Low Power Consumption



SenseLive X8300
PLC Modbus Gateway

- Dual RS485 Ports
- Supports multiple hosts and storage modes
- WiFi/Ethernet/4G connectivity
- Modbus TCP ↔ RTU



SenseLive X9900
Modbus Gateway

- Protocol: Profinet-Modbus Conversion
- Range: -40 to 85°C
- Serial: 4x RS485 (300-921600 baud)
- Modes: Modbus Master/Slave, Profinet Slave, Modbus TCP Slave



SenseLive X7090
Modbus gateway RS232/485/422 To WIFI/Ethernet

- Support Ethernet & WiFi
- RS232, RS485 and RS422 serial ports
- Interface 485: Terminal block DB9
- Frequency Range 2.412GHz-2.484GHz



SenseLive LoRaWAN Gateway
Multi-channel Gateway

- Outdoor Edge Gateway
- 4G LTE, GSM, Ethernet connectivity
- Resistant to all weather conditions
- TX up to 27 dBm, up to RX -139 dBm



SenseLive 2M1S
2 channel Splitter / 2 master 1 Slave Hub

- Supports 2-Masters-1-Slave, 1-Master-2-Slaves mode
- 3-RS485 ports with separate settings
- 9-24V DC wide voltage input



SenseLive S2385H
1 channel RS232/485 to 4 channels RS485

- 4-port industrial isolated RS485 hub/splitter
- supports up to 256 slave nodes
- Slave port has 2500V voltage isolation protection.



SenseLive S485H
8 Channel S485H-RS485 HUB Remote IO Controller

- 8 RS485 Slave with 1 Master Port
- Opto-Isolated for High Reliability
- High Band Rate up to 460800bps
- Power Supply: DC 9-24V



SenseLive S4050
Industrial Grade Switch

- 5-port 10/100M adaptive Ethernet Switch
- Compact Rail-Mounted Design
- Wide 9-24V DC Power input with Terminal connection
- Plug-and-play, no configuration required

Wireless Busbar Temperature Monitoring Solution



SenseLive Edge8000 Wireless Busbar/ Surface Temperature Monitoring System

- Up to 60 wireless sensors
- Integrated Energy Meter
- RS485 Data Output
- Built-In Dual Relays
- 4 x DI Input



SenseLive SenseBT-222 Battery-Powered Wireless Temperature

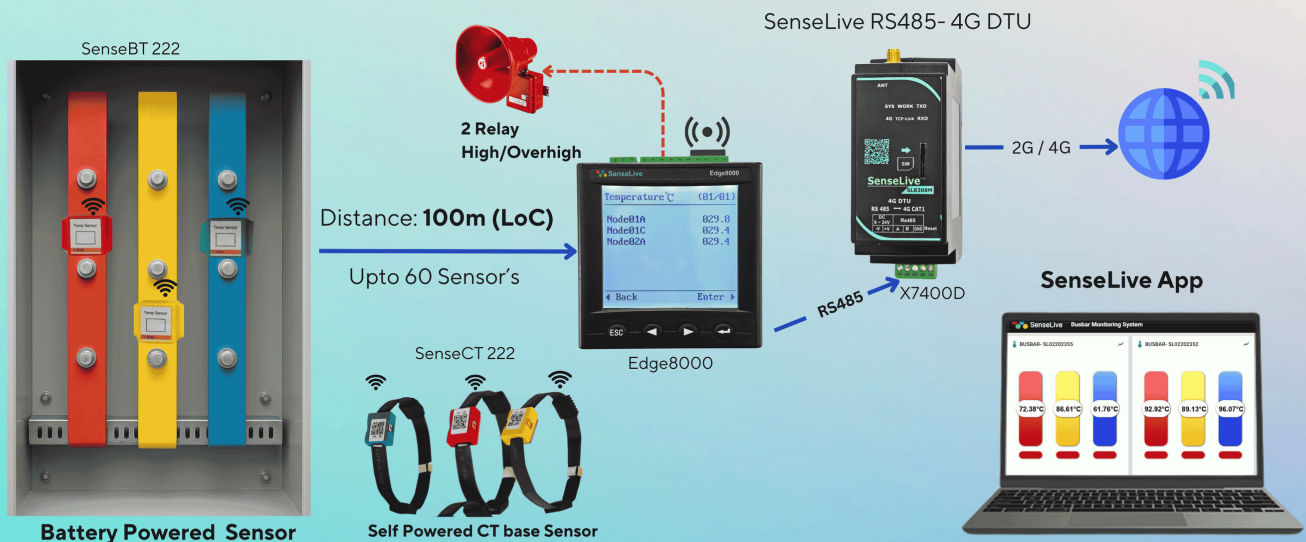
- Long Battery Life > 5 Year
- Wide Range -40 to 125 °C
- Industrial Design
- Wireless Communication



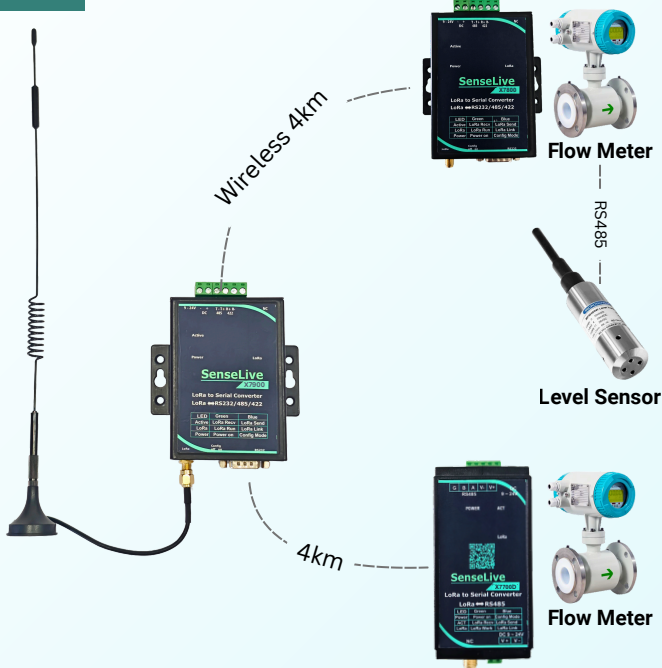
SenseLive SenseCT-222 CT-Powered Wireless Temperature Sensor

- Self-Powered Generation
- Real-Time data every 30 Second
- Easy Installation
- Maintenance-Free

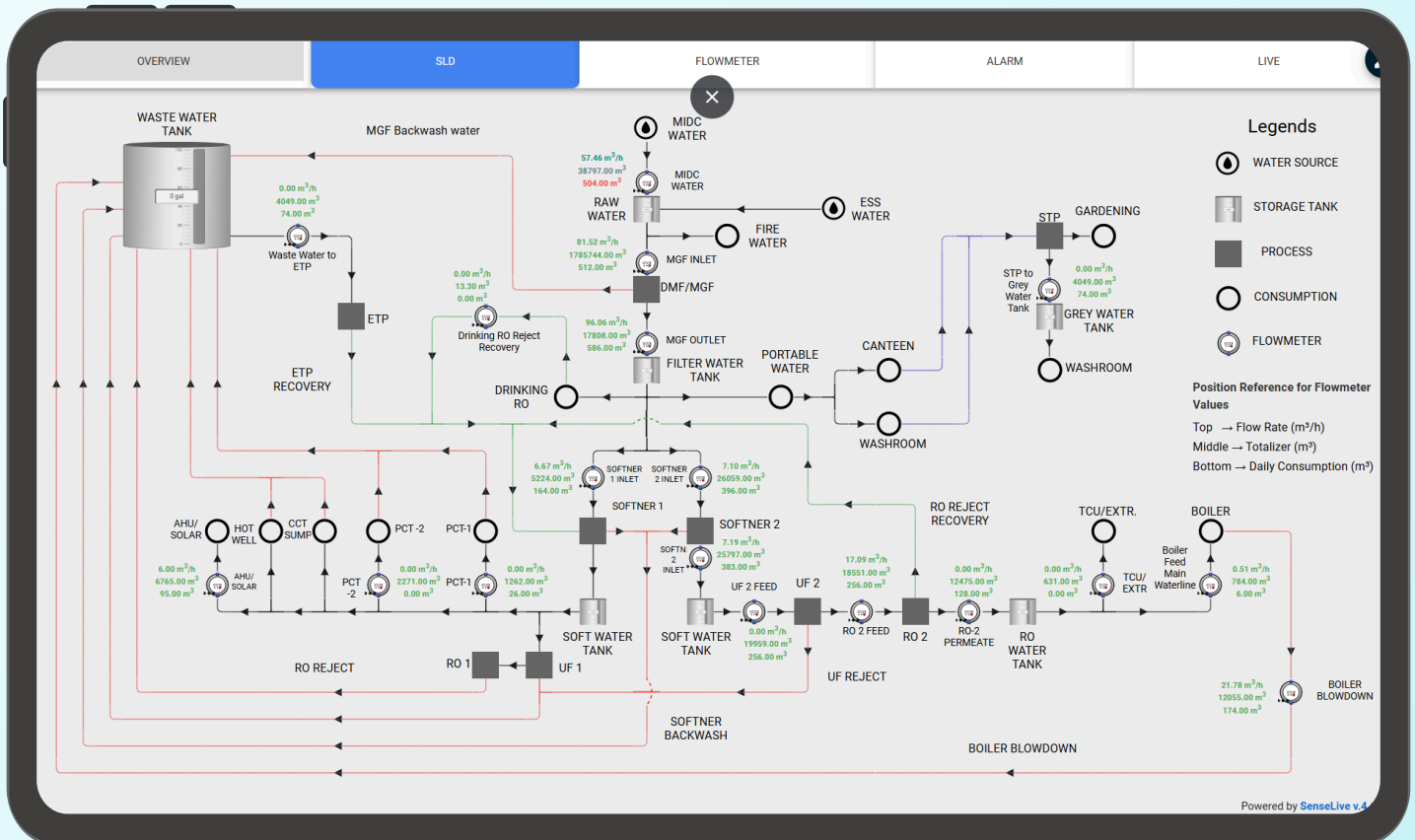
Wireless Busbar Temperature Monitoring System



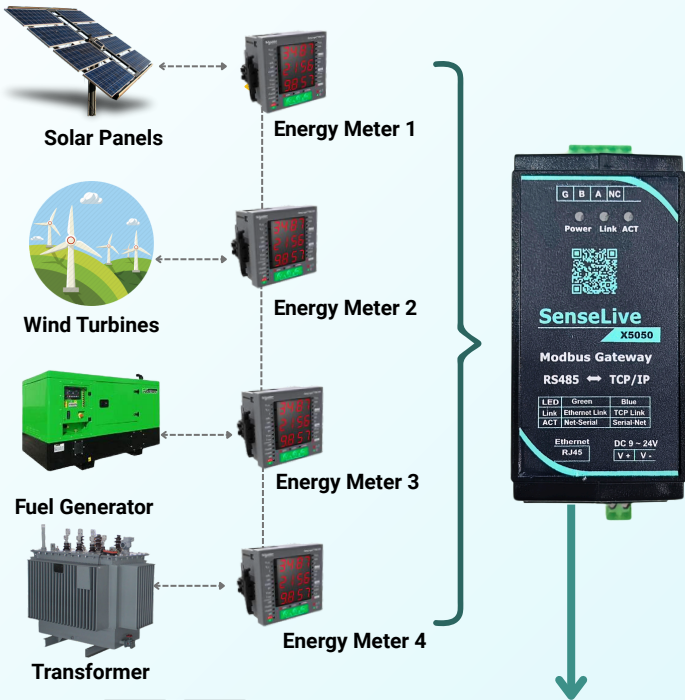
Water Management System



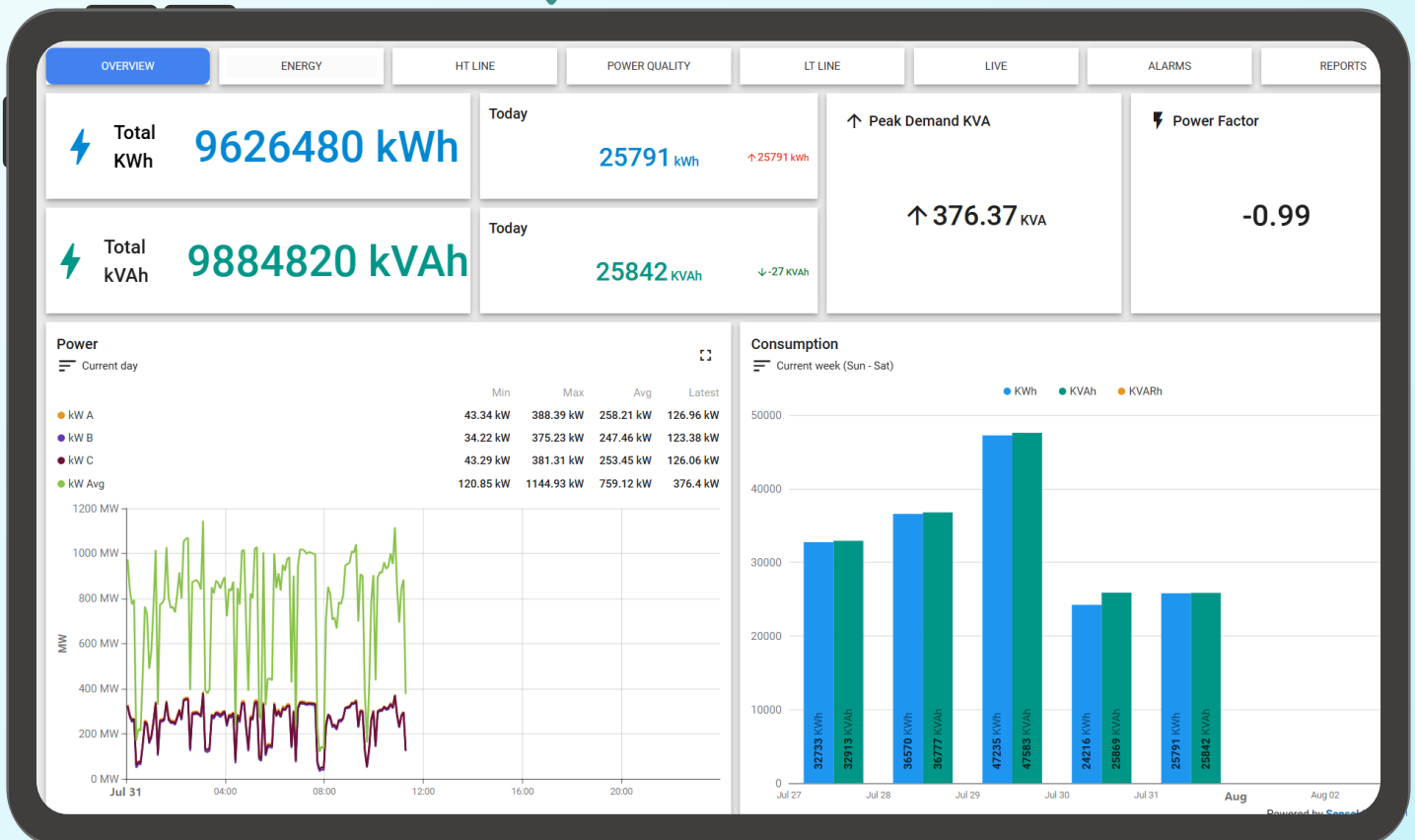
- Wireless LoRa/LoRaWAN Connectivity 4km
- Real -Time Telemetry & Cloud Dashboard
- Intelligent Anomaly Detection & Alerts
- Historical Data Logging & Custom Reports
- Predictive Analytics & Maintenance Forecasting
- Enterprise-Grade Security & Scalable Architecture



Energy Management System



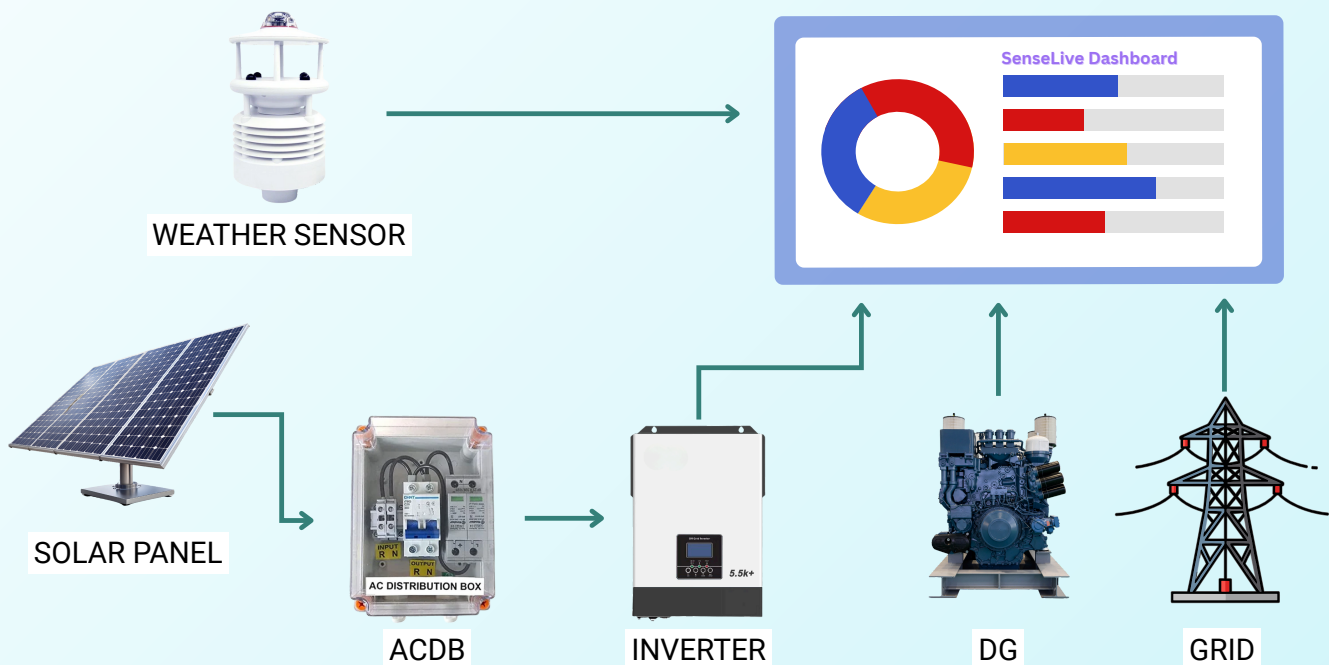
- Real-Time Energy Consumption Monitoring
- Power Quality Analysis & Instant Alerts
- Historical Data Logging & Custom Reports
- Predictive Analytics & Demand Forecasting
- Prescriptive Reports for Action
- Automated Energy Audits & Benchmarking
- Up to 20% Cost Reduction



Optimize Your Solar with EMS

For Industries and Commercial Buildings

Boost solar output and reduce losses



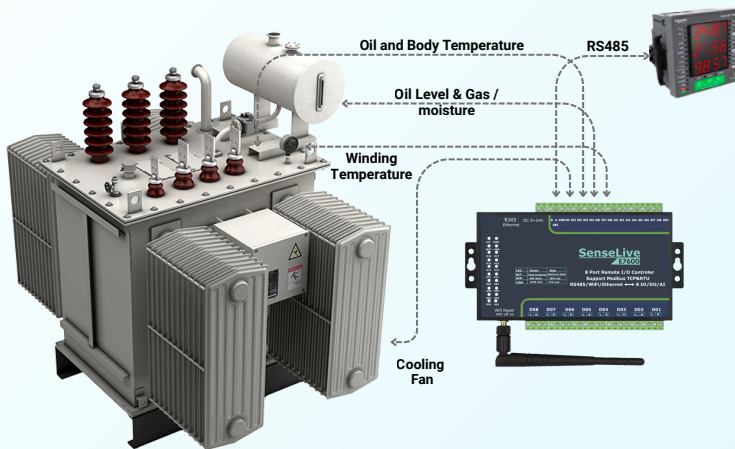
FEATURES

- ✓ **PERFORMANCE RATIO (PR) AND SPECIFIC YIELD ANALYTICS**
- ✓ **HISTORICAL PERFORMANCE ANALYTICS**
- ✓ **AMBIENT TEMPERATURE AND ATMOSPHERIC PRESSURE MONITORING**
- ✓ **WIND SPEED, WIND DIRECTION AND RAINFALL**
- ✓ **IRRADIANCE vs GENERATION**

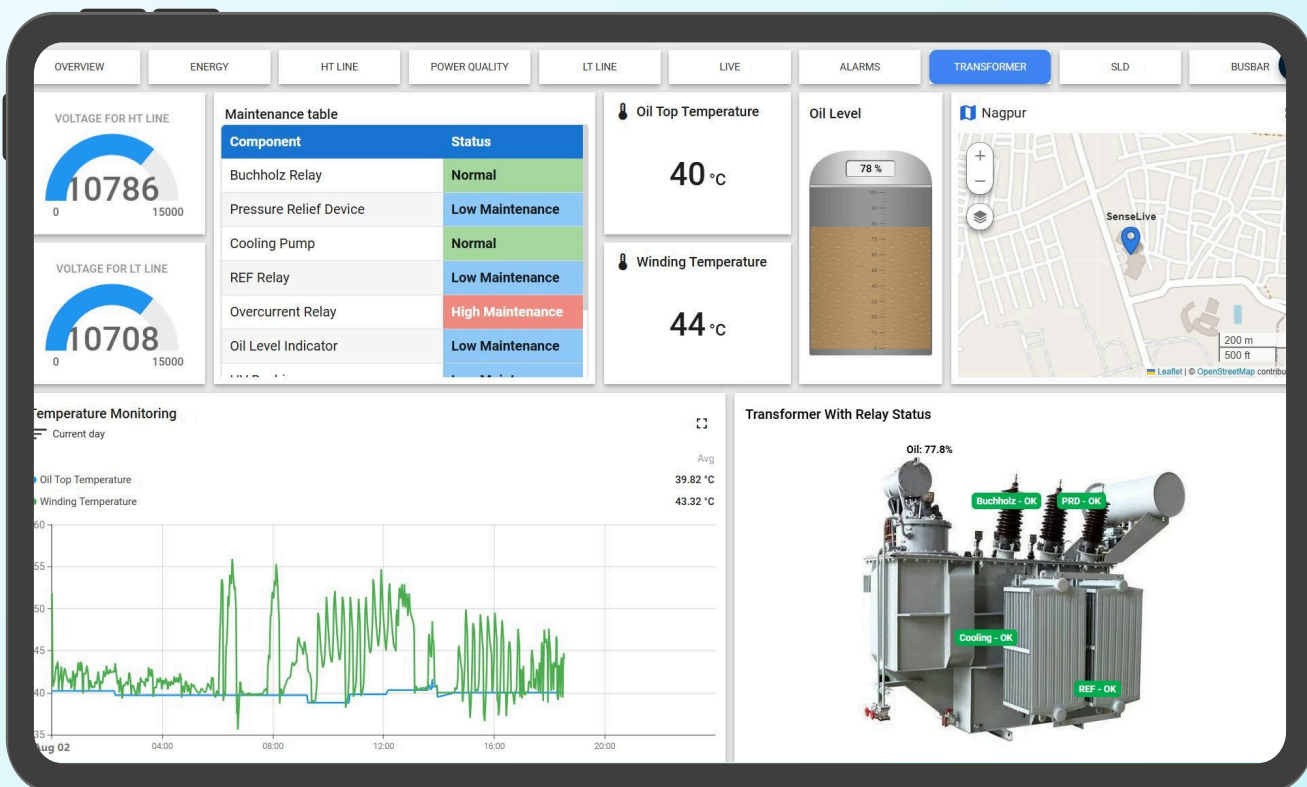
INTERACTIVE DASHBOARD



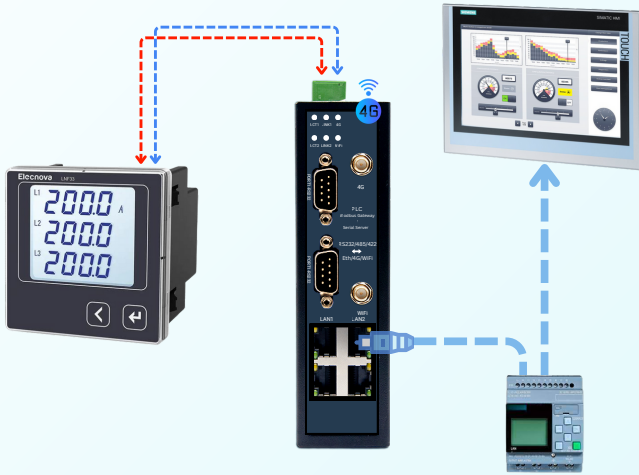
Transformer Monitoring System



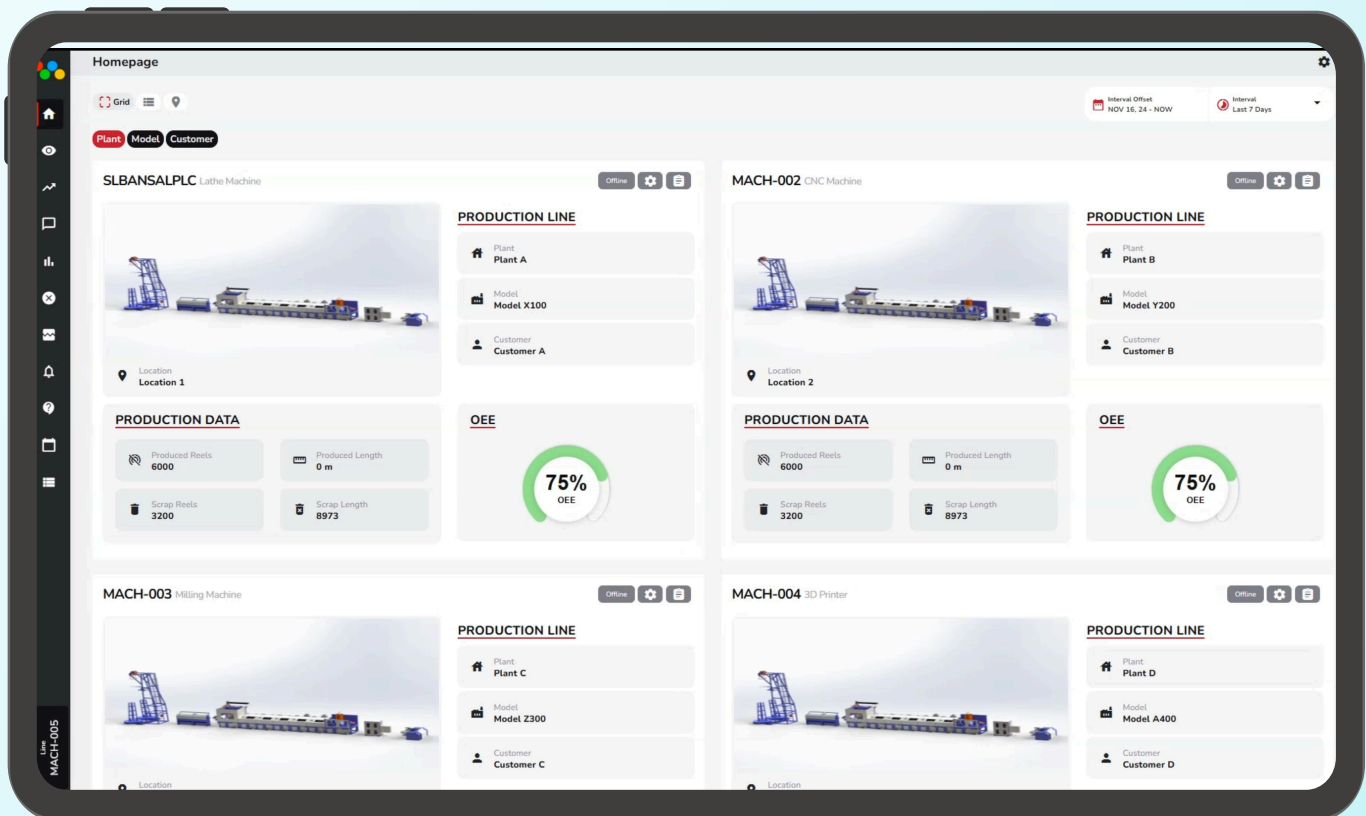
- ✓ Oil Level Sensor triggers alarms for low levels.
- ✓ Maintenance Alerts & Exhaust Operation Status.
- ✓ Controller collects data and controls devices.
- ✓ Cooling Fan is auto-controlled for cooling.
- ✓ Overcurrent Detection and Alerts



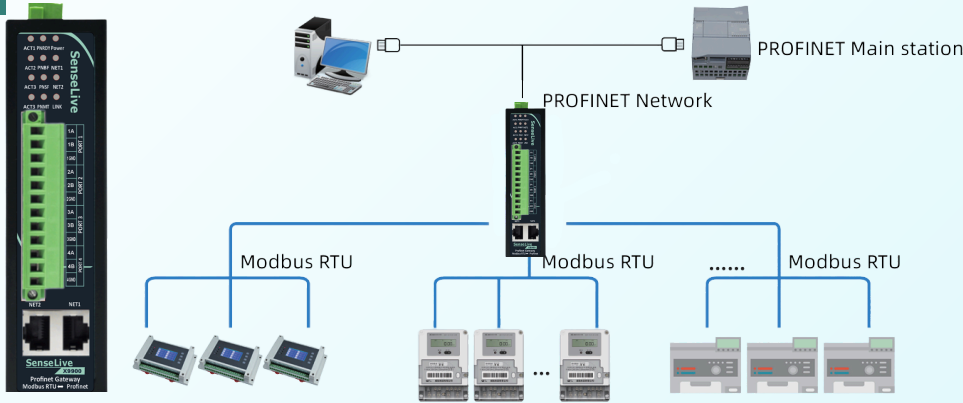
Production Execution Monitoring



- ✓ Edge to Cloud Integration in real-time data collection from sensors and devices to cloud platforms.
- ✓ Multi-Protocol Support MQTT, Modbus, HTTP, PROFINET, LoRa, and more.
- ✓ Secure Communication in encrypted data transmission with access control and role-based monitoring.
- ✓ Interoperability seamlessly connects with SCADA, PLC, ERP, and MES systems.
- ✓ Smart Analytics Layer enables real-time alerts, predictive maintenance, and performance optimization.



Modbus TO PROFINET Gateway



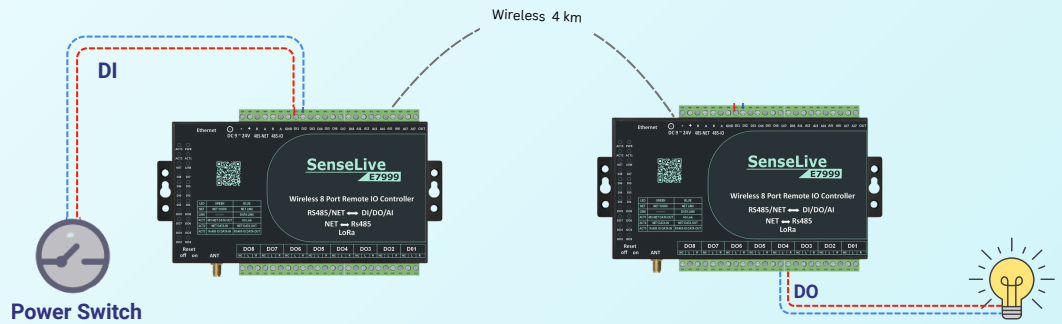
Modbus to PROFINET Gateway

A high-performance industrial gateway enabling seamless protocol conversion between Modbus (RS485) and PROFINET networks. Supports multiple Modbus slave devices and PLCs, including VFDs, smart meters, flow meters, and sensors.

8-Ch DI/DO/AI Remote IO Controller with LoRa

8-Ch DI/DO/AI Wireless IO Controller

LoRa remote IO controller with 8-channel DI/DO/AI, high-speed precise data collection, and automatic relay control via Modbus RTU



OUR VALUABLE CUSTOMERS



SenseLive Technologies

4th Floor GHRTBIF, CRPF Gate no 3,
Nagpur, Maharashtra, India 440016



+919604070622,

+918408058531,

+91 9175504808.



info@senselive.io



www.senselive.io